

Smart RFID Hotel Room Key Card System SL-HA508H



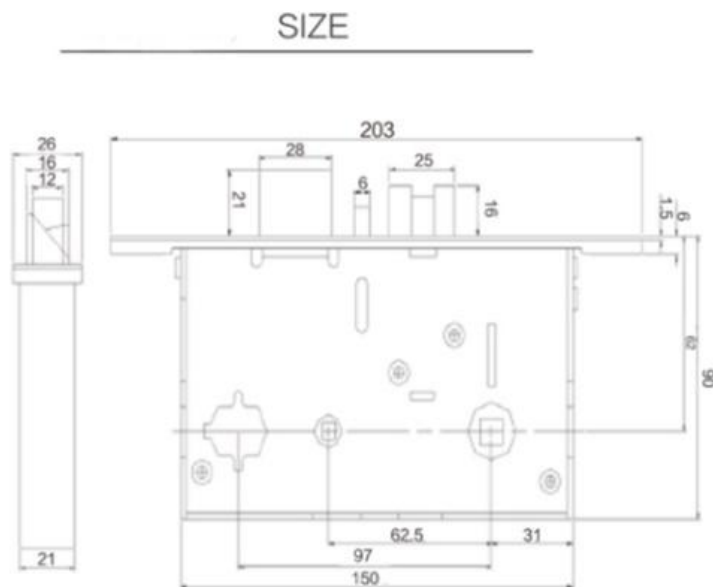
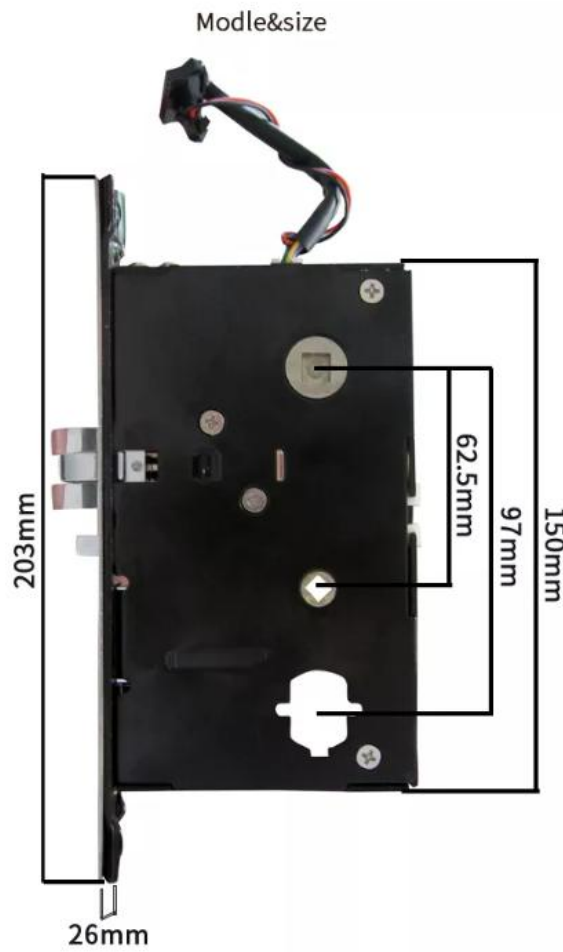
1, Features:

- European style, classic style, noble, SUS304 hard stainless steel material, to ensure that the door lock is more durable;
- American Standard 5 bolt structure lock core, hierarchical management;
- Triple mute locking body;
- The motherboard supports anti-interference and error correction functions;
- The lock information will not be lost when the power is off;
- A clock inner lock controls the key card use time;
- Anti-static support;
- Low voltage alarm;
- Suitable for door thickness 35-55mm

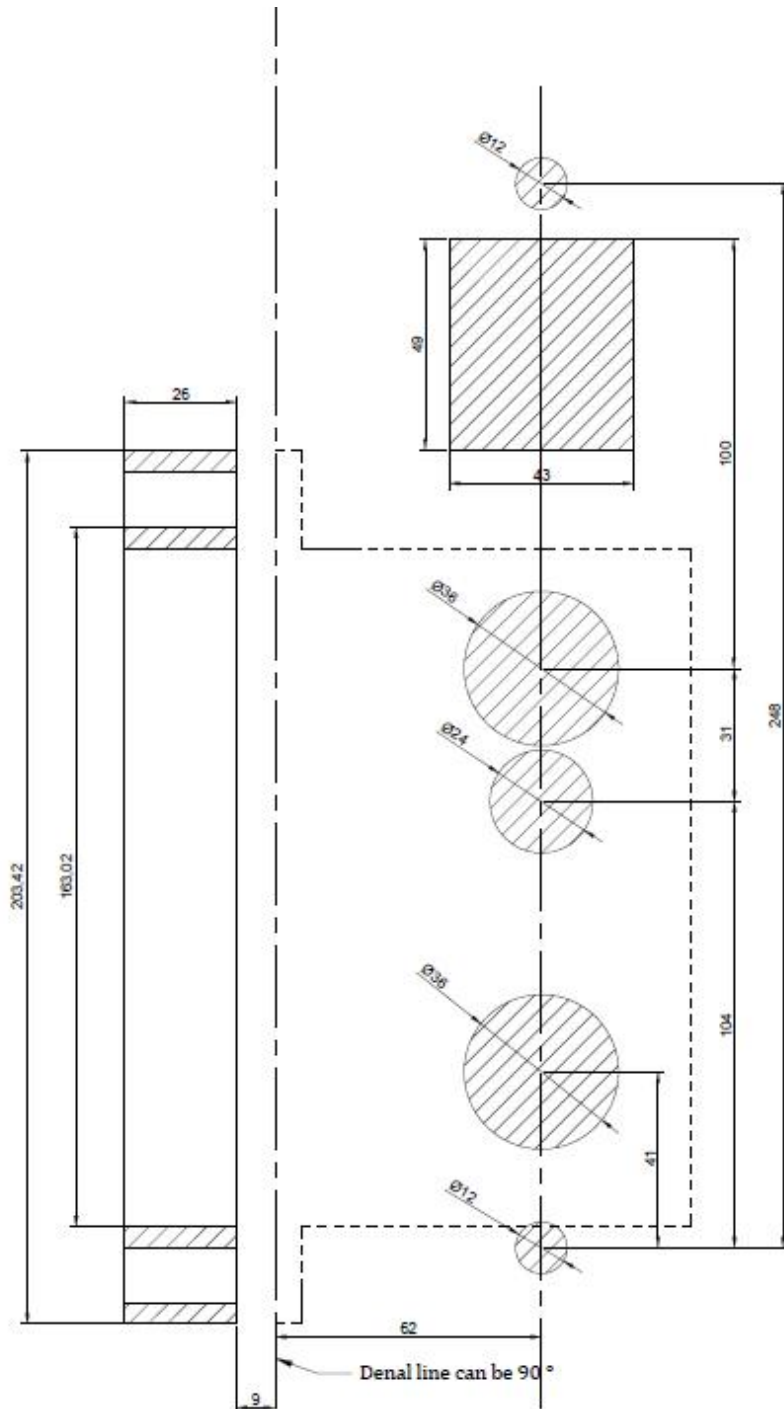
2, Specification:

Material	Inner steel plate Outer 304 stainless steel
Mortise	U.S Mortise with 5 Latches
Door Type	Wooden door, composite door
Power supply	6V (4x AA batteries)
Unlock method	swipe + key
Low voltage worming	Yes
Card reading distance	less than 3CM
Color:	Silver / gold / red ancient / black
Application:	hotel / school / office/apartment, etc.
Door thickness:	30-55mm
Software	Yes
Type	Hotel management software
OS	Windows XP/Vista
Card Type	Mifare Card/ T555 / EM430 / apartment ID board
Card reader	Hotel lock encoder
Environment & Verification	
Working Temperature	-20°C-50°C
Working Humidity	20%-70%
Backup unlock mechanism	Mechanical Key
Dimension (L*W)	300x75x20/15mm
Warranty:	2 year
Weight:	3KG
Battery life	support 5000 lockout unlocking operation

3, Lock Mortise:



4, Installation Drawing



This template is for reference only.
The actual drilling is subject to the actual product.
Door thickness determines the size of the opening.